

FOR LEASE

3,167 Total SF
\$0.59/SF Gross

**Brummett
& COMPANY**
14950 Heathrow Forest Parkway, Suite 100
Houston, TX 77032 Phone: 281-442-5404

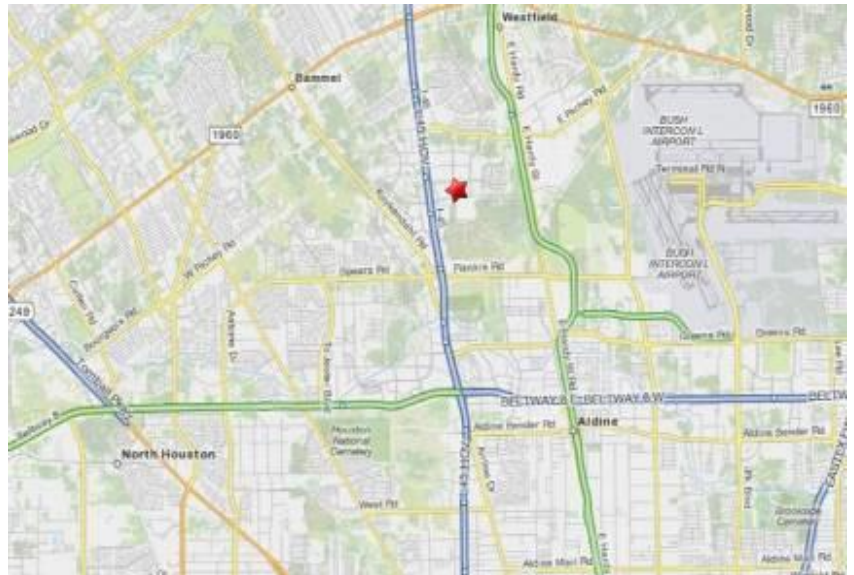


CENTURY PLAZA BUSINESS PARK

419 CENTURY PLAZA DR., STE. 210, HOUSTON, TX 77073

DETAILS

- Attractive and secure business park in North Houston submarket, just minutes south of new ExxonMobil campus
- Easy access to I-45, Beltway 8 & Hardy Toll Rd.
- Electric-gated truck court with key-code access
- Flex office/warehouse space
- 85-90% Air conditioned
- Truck Doors: (1) Grade Level

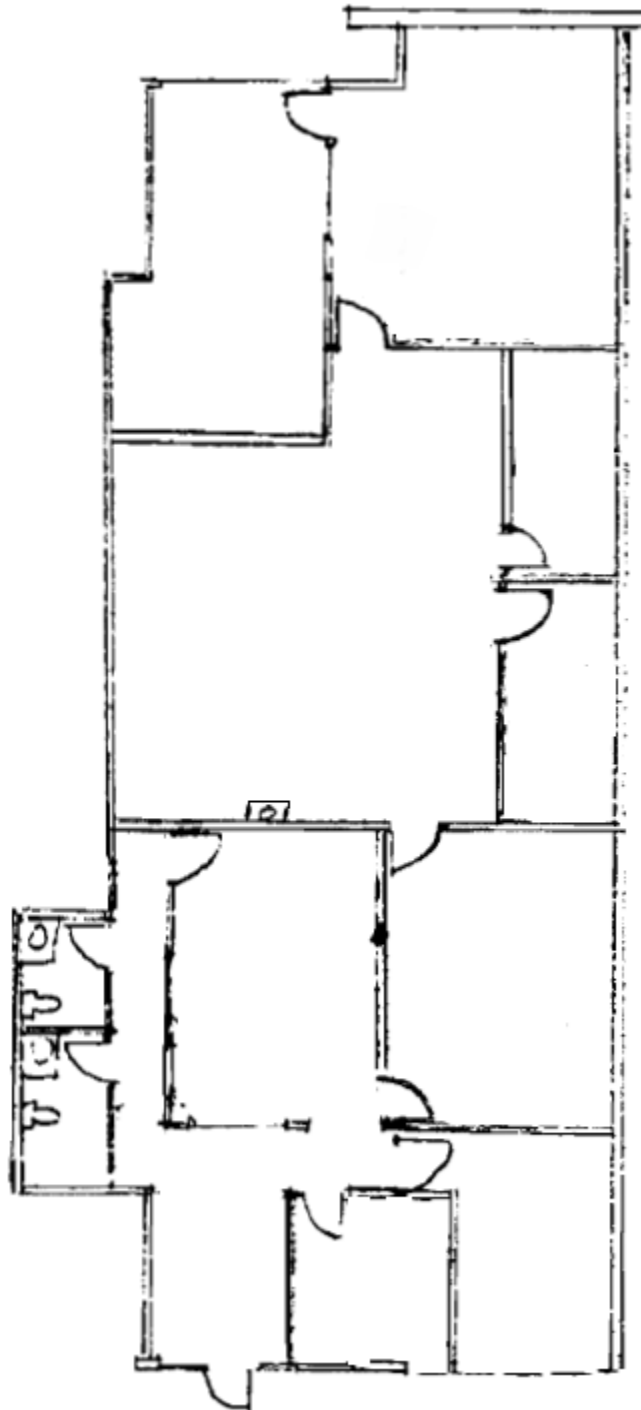


© 2015 Brummett and Company. The information above is believed reliable. While its accuracy is not doubted, no guarantee, warranty or representation about it is hereby stated or implied. It is the responsibility of any interested party to independently confirm its accuracy and completeness. Rates quoted are "as-is" initial base rents only. Interested parties should conduct a careful, independent investigation of the properties to determine suitability.

FOR LEASE

3,167 Total SF
\$0.59/SF Gross

 **Brummett
& COMPANY**
14950 Heathrow Forest Parkway, Suite 100
Houston, TX 77032 Phone: 281-442-5404



CENTURY PLAZA BUSINESS PARK

419 CENTURY PLAZA DR., STE. 210, HOUSTON, TX 77073

© 2015 Brummett and Company. The information above is believed reliable. While its accuracy is not doubted, no guarantee, warranty or representation about it is hereby stated or implied. It is the responsibility of any interested party to independently confirm its accuracy and completeness. Rates quoted are "as-is" initial base rents only. Interested parties should conduct a careful, independent investigation of the properties to determine suitability.