

FOR LEASE

33,776 Total SF
\$0.45/SF Gross

**Brummett
& COMPANY**

14950 Heathrow Forest Parkway, Suite 100
Houston, TX 77032 Phone: 281-442-5404



GREENBOUGH CENTER

10401 GREENBOUGH DR., STAFFORD, TX 77477

Available 10-1-15

DETAILS

- Stafford/Sugar Land/SW Houston Market
- Attractive tilt-wall freestanding building
- Well-maintained landscaping
- Landlord will consider subdividing as low as 10,000 SF
- Space dimensions:
 - Approximately 80% warehouse, 20% office
 - 20' Clear height
 - 100' Truck court
 - OH doors: (7) dock high, (1) semi-dock, and (1) ramp to grade
- New roof installed in 2009
- Fire sprinklered
- Easy access to Hwy 59, Beltway 8, & Hwy 90 alt.



Map Data: Google

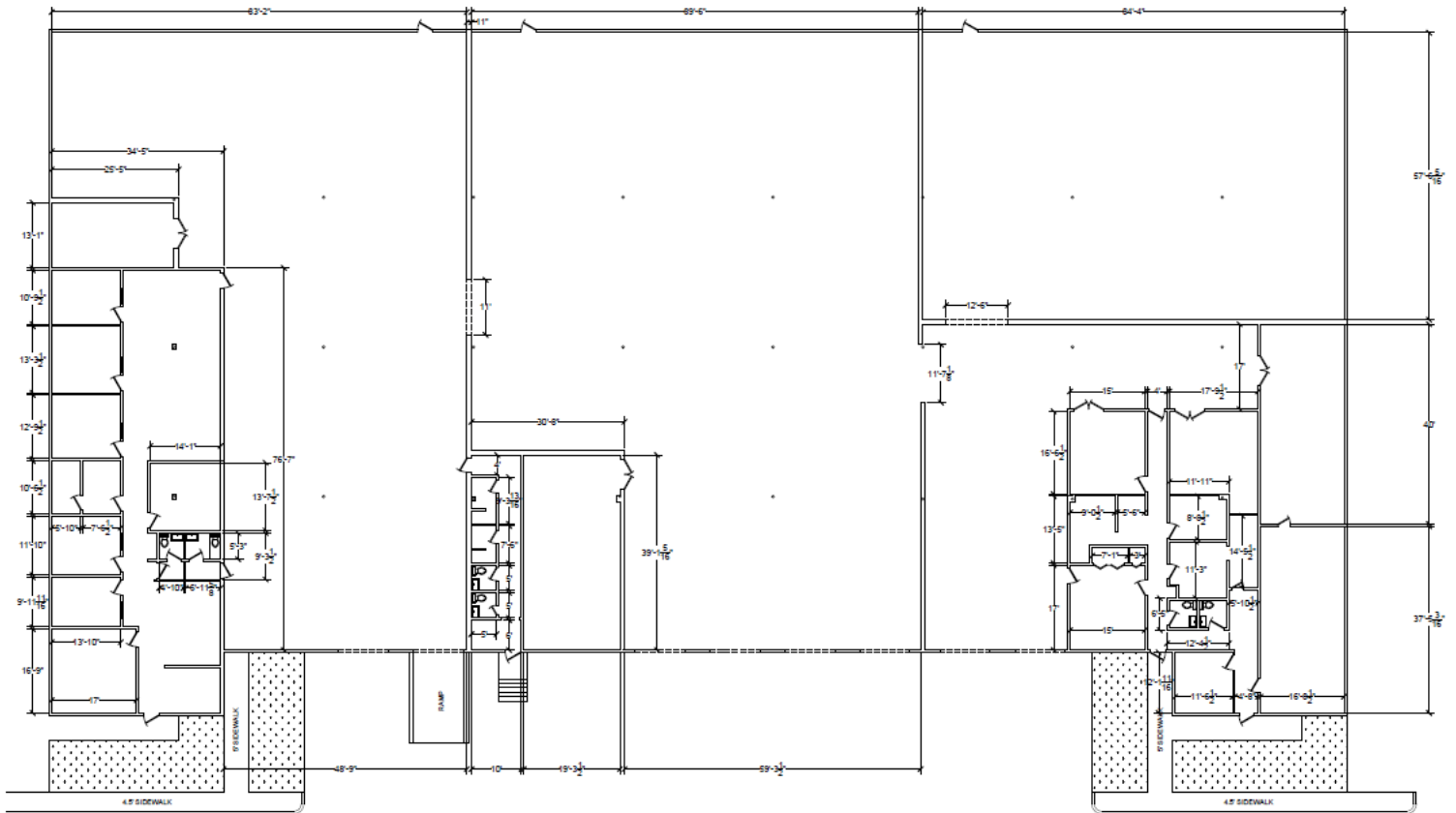
© 2015 Brummett and Company. The information above is believed reliable. While its accuracy is not doubted, no guarantee, warranty or representation about it is hereby stated or implied. It is the responsibility of any interested party to independently confirm its accuracy and completeness. Rates quoted are "as-is" initial base rents only. Interested parties should conduct a careful, independent investigation of the properties to determine suitability.

FOR LEASE

33,776 Total SF
\$0.45/SF Gross



14950 Heathrow Forest Parkway, Suite 100
Houston, TX 77032 Phone: 281-442-5404



GREENBOUGH CENTER

10401 GREENBOUGH DR., STAFFORD, TX 77477

© 2015 Brummett and Company. The information above is believed reliable. While its accuracy is not doubted, no guarantee, warranty or representation about it is hereby stated or implied. It is the responsibility of any interested party to independently confirm its accuracy and completeness. Rates quoted are "as-is" initial base rents only. Interested parties should conduct a careful, independent investigation of the properties to determine suitability.