

FOR LEASE

15,900 Total SF
\$0.41/SF NNN

Available Dec 1, 2015



14950 Heathrow Forest Parkway, Suite 100
Houston, TX 77032 Phone: 281-442-5404

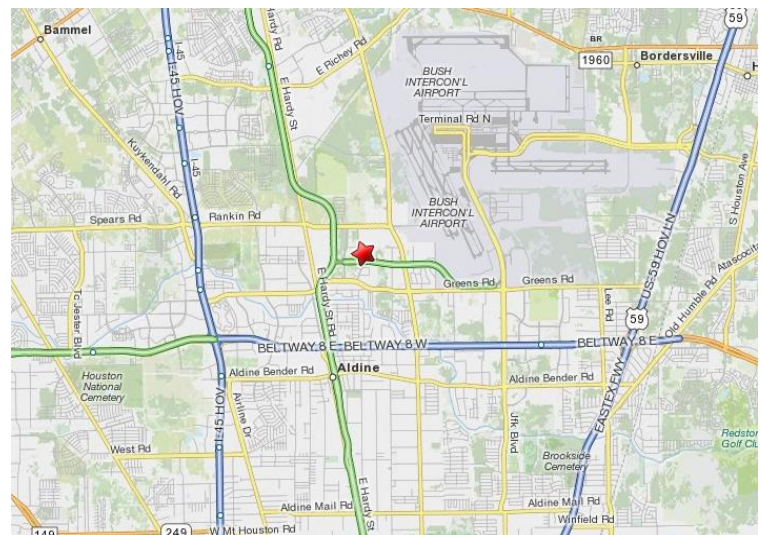


TRANS PHASE II BUSINESS PARK

16536 Air Center Blvd, Houston, TX 77032

DETAILS

- Attractive flex-industrial park in Central Green area of North Houston, near IAH airport
- Easy access to I-45, Beltway 8 & Hardy Toll Rd.
- Private security patrolled
- Truck doors: Dock-high (7), including (3) with ramps
- Space dimensions and amenities:
 - 4,200 SF Office
 - 11,700 SF Warehouse
 - Small private fenced yard
 - 3-ton overhead rail crane included



© 2015 Brummett and Company. The information above is believed reliable. While its accuracy is not doubted, no guarantee, warranty or representation about it is hereby stated or implied. It is the responsibility of any interested party to independently confirm its accuracy and completeness. Rates quoted are "as-is" initial base rents only. Interested parties should conduct a careful, independent investigation of the properties to determine suitability.

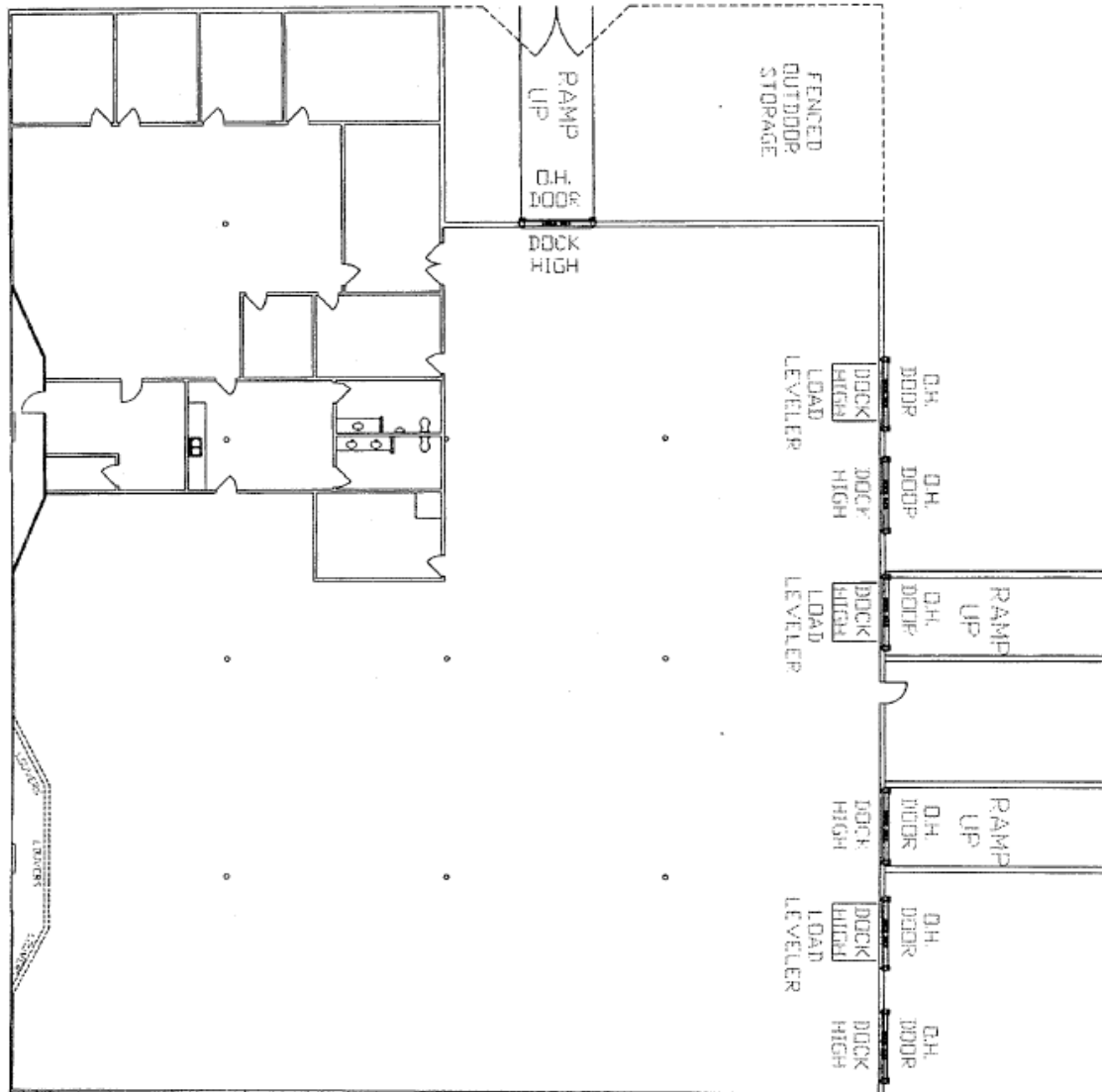
FOR LEASE

15,900 Total SF
\$0.41/SF NNN

Available Dec 1, 2015



14950 Heathrow Forest Parkway, Suite 100
Houston, TX 77032 Phone: 281-442-5404



TRANS PHASE II BUSINESS PARK

16536 Air Center Blvd, Houston, TX 77032

© 2015 Brummett and Company. The information above is believed reliable. While its accuracy is not doubted, no guarantee, warranty or representation about it is hereby stated or implied. It is the responsibility of any interested party to independently confirm its accuracy and completeness. Rates quoted are "as-is" initial base rents only. Interested parties should conduct a careful, independent investigation of the properties to determine suitability.