

FOR LEASE

10,989 Total SF
\$0.41/SF NNN



14950 Heathrow Forest Parkway, Suite 100
Houston, TX 77032 Phone: 281-442-5404

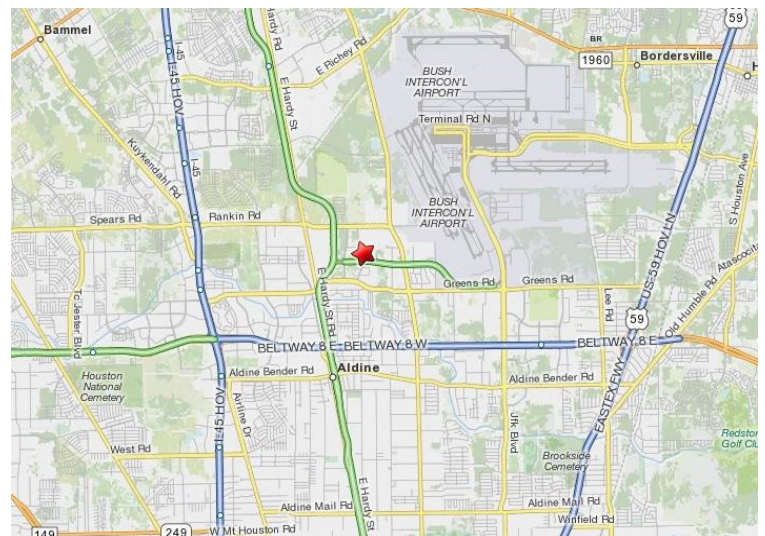


TRANS PHASE II BUSINESS PARK

16516 Air Center Blvd, Houston, TX 77032

DETAILS

- Attractive flex-industrial park in Central Green area of North Houston, near IAH airport
- Easy access to I-45, Beltway 8 & Hardy Toll Rd.
- Private security patrolled
- Truck Doors: 2 dock high
- Space dimensions and amenities:
 - 5,200 SF Office
 - 5,800 SF Warehouse
 - 20' Clear height



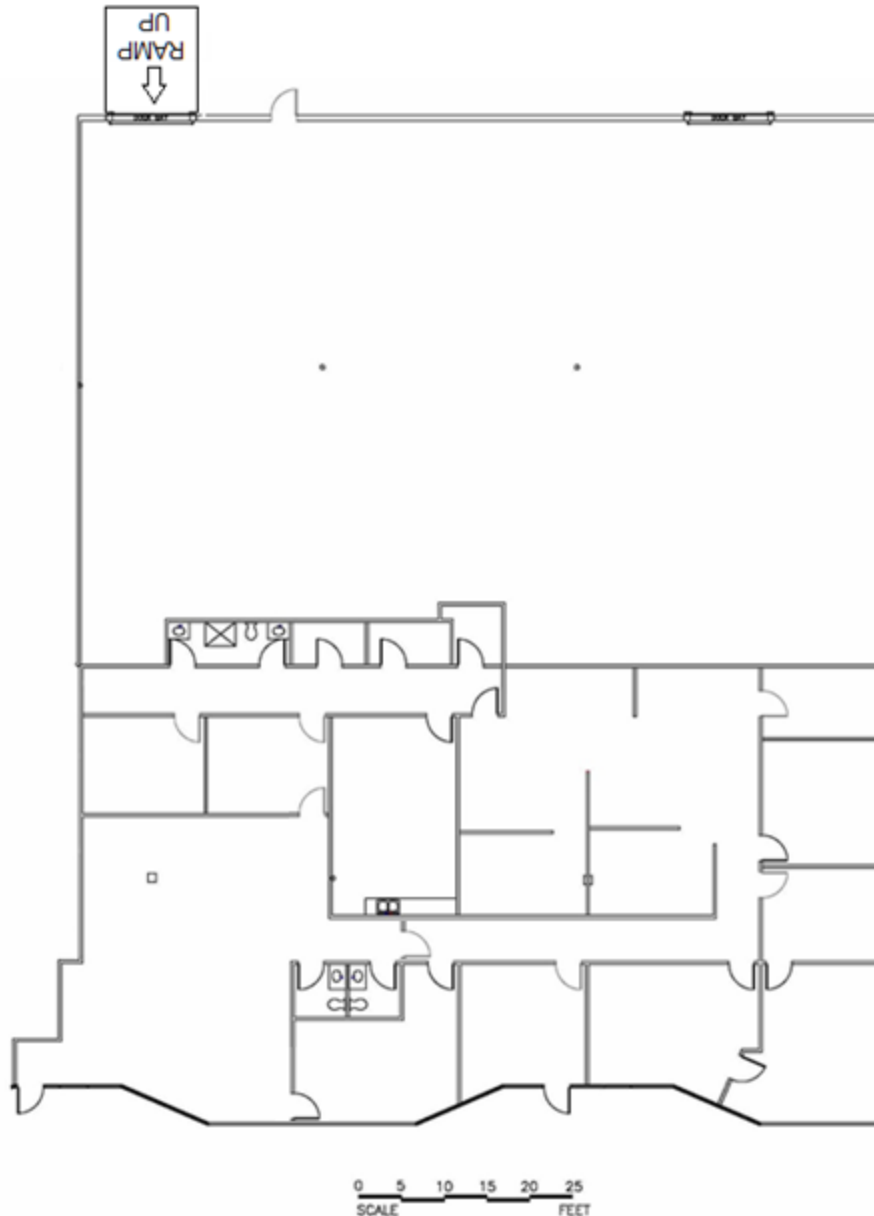
© 2016 Brummett and Company. The information above is believed reliable. While its accuracy is not doubted, no guarantee, warranty or representation about it is hereby stated or implied. It is the responsibility of any interested party to independently confirm its accuracy and completeness. Rates quoted are "as-is" initial base rents only. Interested parties should conduct a careful, independent investigation of the properties to determine suitability.

FOR LEASE

10,989 Total SF
\$0.41/SF NNN



14950 Heathrow Forest Parkway, Suite 100
Houston, TX 77032 Phone: 281-442-5404



TRANS PHASE II BUSINESS PARK

16516 Air Center Blvd, Houston, TX 77032

© 2016 Brummett and Company. The information above is believed reliable. While its accuracy is not doubted, no guarantee, warranty or representation about it is hereby stated or implied. It is the responsibility of any interested party to independently confirm its accuracy and completeness. Rates quoted are "as-is" initial base rents only. Interested parties should conduct a careful, independent investigation of the properties to determine suitability.